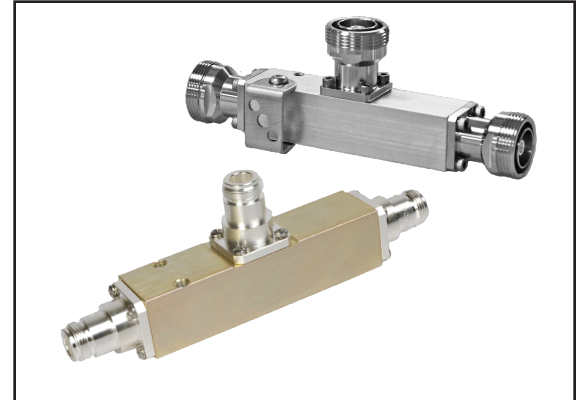


DAS TAPPERS - UNEQUAL DIVIDERS 380-520 MHz WITH DC CONN. TO COUPLE PORT

UD-XXN/D Wideband Low Loss Power Tappers/Unequal Dividers/Signal Samplers

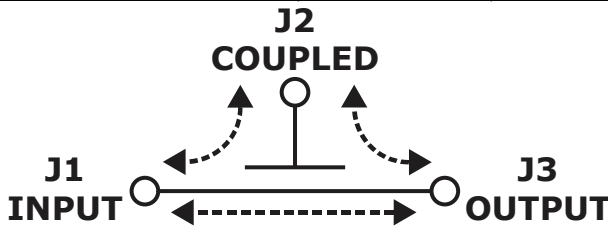
Common Specifications	
Frequency Range:	380 - 520 MHz (per table)
Maximum Input Power:	300 Watts Avg., 3kW Peak, any port
Ohmic/Dissapative Insertion Loss:	0.17 dB (4.8%)
PIM:	160 dBc Max
Impedance:	50 Ohms
Connectors:	Flange mount Type-high mating torque Female standard, Male available, any combination
DC Continuity:	J1 ↔ J3
Material and Finish:	Aluminum 6061, non-machined raw extruded mill finish, clear iridate
Environmental:	IP67, Approved for outdoor use
Weight:	6 Oz Type N, 8 Oz Din
Mounting:	Tapped holes-Bracket and screws supplied

Made in USA



NOTE: VSWR not specified for port J2

Typical Part Number		
UD-A11-05XX Part Number Connector ID	Connector:	Connector ID:
	Type N	N
	7-16 DIN	D
	4.1-9.5 MINIDIN	D41
	4.3-10.0 MINIDIN	D43



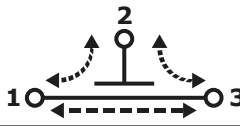
R&D Microwaves Unequal Power Dividers (re-active splitters) utilize a unique airline distributed capacitor construction that provides the lowest insertion loss, input VSWR, high power, and exceptional low PIM performance. The UD series are available in 1 dB coupling value increments up to 13 dB, providing split ratios from 2:1 up to 19:1. The units are provided with high torque connectors that are flange mounted to the housing chassis with O-rings for sealing for a robust and reliable connection. Mounting brackets and screws are supplied for easy wall mounting applications. All units achieve an IP67 environmental rating and are 100% tested to assure PIM spec compliance.

(1) SPECIFIED OVER 380-520 MHz

Highlighted Columns are GUARANTEED AND TESTED for each Unit, Unhighlighted Columns are typical or nominal values

Part Number	Coupling (dB)	Split Ratio J3:J2	Coupling (dB)		Nom. Cpling (dB) 380-520	Return Loss J1 (1)
			J1 ↔ J2	J1 ↔ J3		
UD-A11-05	5	2:1/3dB	4.8	1.8	4.4	19.0
UD-A11-06	6	3:1/4.8dB	6.0	1.3	6.5	19.8
UD-A11-07	7	4:1/6dB	7.0	1.0	7.4	19.8
UD-A11-08	8	5.3:1/7.25dB	8.0	0.8	8	19.8
UD-A11-09	9	7.0:1/8.5dB	9.0	0.6	9	19.8
UD-A11-10	10	9.0:1/9.5dB	10.0	0.5	10.1	20.8
UD-A11-11	11	12:1/10.6dB	11.0	0.4	11.2	20.8
UD-A11-12	12	15:1/12dB	12.0	0.3	12.2	20.8
UD-A11-13	13	19:1/13dB	13.0	0.2	13	23.1

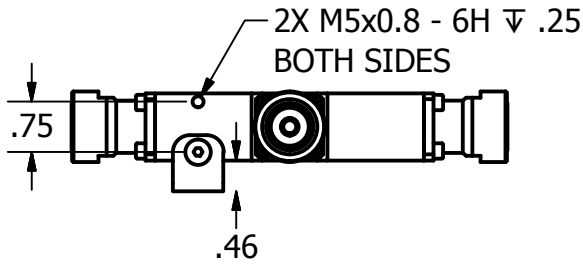




DAS TAPPERS - UNEQUAL DIVIDERS

380-520 MHz WITH DC CONN. TO COUPLE PORT

UD-XXN/D Wideband Low Loss Power Tappers/Unequal Dividers/Signal Samplers



Mounting Brackets
& Screws Supplied

